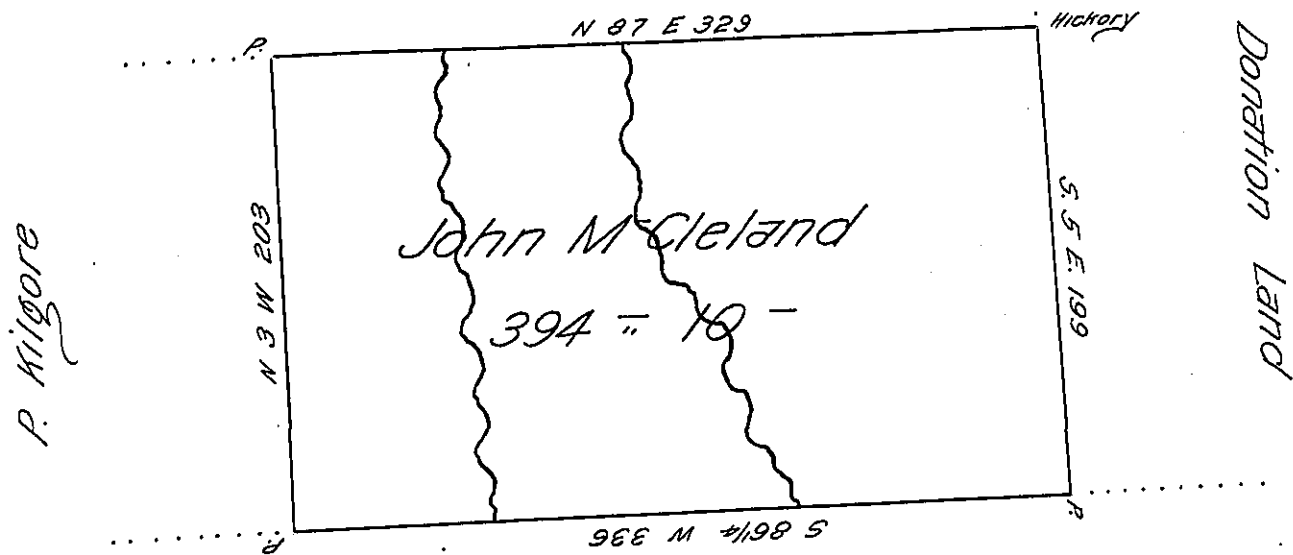


James Kilgore



WRITTEN LAND

Situate on the waters of Sandy Creek in District No 3 Allegany County; containing Three hundred ninety four Acres ten perches and allowance; Surveyed 12 July 1800. on Actual Settlement made by John M-Cleland

Surveyor General
of
Pennsylvania

Ben Stokely D.S.

IN TESTIMONY that the above is a copy of the original remaining on file in the Department of Internal Affairs of Pennsylvania, made conformably to an Act of Assembly approved the 16th day of February, 1833, I have hereunto set my Hand and caused the Seal of said Department to be affixed at Harrisburg, this thirtieth day of June 1906.

Isaac R. Brown
Secretary of Internal Affairs.